

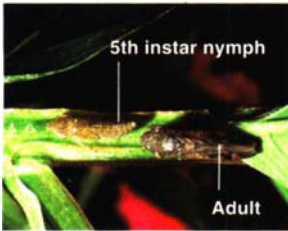
How to distinguish glassy-winged sharpshooter from its “look-a-likes”

Lucia G. Varela, North Coast IPM Advisor

An intense search is under way in many areas to prevent the introduction of glassy-winged sharpshooter, a nonnative invasive insect linked to the spread of *Xylella fastidiosa*, the bacterium that causes Pierce’s disease. Since many people have not seen the glassy-winged sharpshooter, it can be confused with other insects occurring in vineyards and backyards (“look-a-likes”). The following photos and descriptions are useful tools in correctly identifying this pest.

Adult glassy-winged sharpshooter

- Approximately 1/2 inch (11 to 13 mm) long.
- Dark brown to black in color with an ivory underside.
- Top of the head has small, ivory-to-yellowish spots.
- Body shape is parallel-sided with a pointed head.
- Wings are partly transparent with reddish veins.
- Wings are folded flat over the body.
- Length of hind tibia has two rows of small spines (fig. 1).
- While resting, they shift their bodies from side to side (inspiring the name “sharpshooters”).



Nymphal stages





- Glassy-winged sharpshooter has five nymphal (immature) stages.
- Nymphal length ranges from 1/16 inch (2 mm) long for the first stage up to 3/8 inch (9 mm) for fifth stage.
- Nymphs are olive-gray with prominent reddish eyes.
- Immatures are wingless and have softer bodies.
- Immatures have piercing/sucking mouthparts and a bulging face.

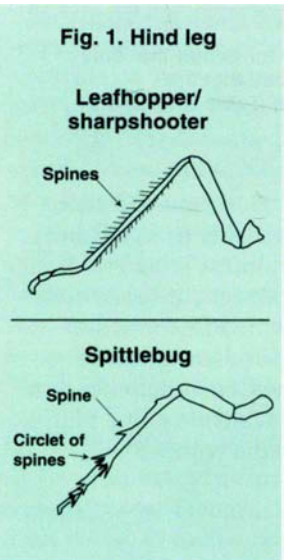
Glassy-winged sharpshooter mouthparts

- Muscles that operate the feeding pump give the face a swollen appearance
- Piercing/sucking mouthparts

Photo by Phil A. Phillips



Look-a-likes	Similar characteristics	Distinguishing characteristics
 Cicada adult	Clear membranous wings Piercing, sucking mouthparts	Wings folded at an angle, forming a roof or tent over the body Larger in size, 1 to 2 inches long Well-developed first pair of legs (expanded front tibia)
 Spittlebug adult	Some have similar coloration, variable from brownish yellow to rusty brown Some approximately same size or slightly smaller Piercing, sucking mouthparts	Body shape broader midbody (frog shaped) tapering toward the front and the end (not parallel-sided) Hind tibia with a circling of spines at apex (fig.1)
 Click beetle adult	Brown coloration Elongate-narrow body May attain length of 1/2 inch (13 mm)	Front wings hard and opaque Chewing-type mouthparts (mandibulate) Posterior corners of the thorax (trunk) prolonged backward into sharp points
 Branch and twig borer adult	Dark brown coloration Cylindrical in shape Approximately same size, 3/8 to 3/5 inch (8 to 16 mm)	Front wings are hard and opaque Chewing-type mouthparts (mandibulate) Thorax wider near the head than at its base



Photos by Jack Kelly Clark except where noted.