

GRAPE FIELD DAY

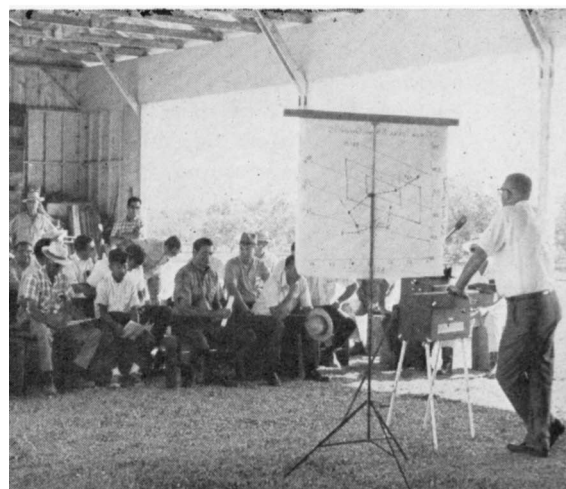
Kearney Horticultural Field Station



FIELD DAYS are an annual event at many of the Agricultural Experiment Station's nine statewide field stations as well as special commodity days, including the Grape Day held in August this year at the Kearney Horticultural Field Station, Reedley. The Grape Day is sponsored by the Department of Viticulture and Enology, U.C., Davis. This year's program (held for the first time at Kearney) included sections on the control of Pacific mite, mechanical harvesting of raisins, wine quality correlation with maturity of Thompson Seedless grapes, control of powdery mildew, spray equipment and techniques in coverage for pest control, and rooting of Thompson

Seedless cuttings. Many of the other projects at the station in agronomy, plant pathology and pomology, vegetable crops, soil science and water science were also brought to the attention of visitors.

Sprayer demonstrations (top right) were a part of the field tour for the more than 200 growers, agribusinessmen, and researchers attending the Grape Day at Kearney Horticultural field station. Field talks (above) and lectures in the open equipment shed allowed visitors an opportunity to hear explanations of the research being conducted, as well as to ask questions of the researchers.



NEW PUBLICATIONS

ready for distribution

Single copies of these publications—except Manuals and books—or a catalog of Agricultural Publications may be obtained without charge from the local office of the Farm Advisor or by addressing a request to: Agricultural Publications, University Hall, University of California, Berkeley, California 94720. When ordering sale items, please enclose payment. Make checks or money orders payable to The Regents of the University of California.

PRODUCTION PRACTICES FOR CALIFORNIA SHEEP. Man. 40. \$1.00. This manual acquaints you with the principal aspects of sheep production in California—the breeds raised; sheep as a business; equipment you will need; the feeding of sheep; and a calendar of operations for a typical year. A list of reference books and periodicals has been added for those who wish to read further on particular phases of sheep raising.

HAY CUBE STORAGE AND FEEDING. Cir. 550. Hay cubes are dense, bite-sized morsels of hay which are field-produced by machines picking up hay from the windrow, or by stationary machines. Cubes have completely changed handling and feeding methods for alfalfa hay. This publication discusses the handling, storage, and feeding methods required for cubes. Numerous illustrations depict equipment and techniques. Design criteria for safe storage are also discussed.

USE OF BANK CREDIT CARDS IN GROCERY STORES. Bul. 843. This study examines the feasibility of retail grocers affiliating with one or more bank credit card plans in order to promote sales. The feasibility tests were the strength of consumer demand for such a service and the impact on sales and profits.

CALIFORNIA AGRICULTURE

Progress Reports of Agricultural Research, published monthly by the University of California Division of Agricultural Sciences.

William W. Paul *Manager*
Agricultural Publications
Jerry Lester *Editor*
Eleanore Browning *Assistant Editor*
California Agriculture

Articles published herein may be republished or reprinted provided no advertisement for a commercial product is implied or imprinted. Please credit: University of California Division of Agricultural Sciences.

California Agriculture will be sent free upon request addressed to: Editor, California Agriculture, Agricultural Publications, University Hall, University of California, Berkeley, California 94720.

To simplify the information in California Agriculture it is sometimes necessary to use trade names of products or equipment. No endorsement of named products is intended nor is criticism implied of similar products which are not mentioned.

