

Brachyrhinus Weevils

spring spray treatment for pest control on nursery grown azaleas, rhododendrons, camellias, heather, other plants

A. Earl Pritchard

Spray applications in early April and early May of some of the newer insecticides may control the damaging *Brachyrhinus* weevils attacking certain nursery plants in the San Francisco Bay area.

The grubs of the weevils often kill azaleas, rhododendrons, camellias, and heather. Other favorite hosts such as peonies, tuberous begonias, privet, and saxifraga, may be seriously weakened.

Five species of *Brachyrhinus* have been introduced into California of which three—*B. sulcatus* (Fab.), *B. meridionalis* (Gyll.), and *B. cribricollis* (Gyll.)—appear to be found most commonly in nurseries. Detailed life-history studies have been made only for *B. sulcatus*, but field observations indicate that the general development of all three species is similar.

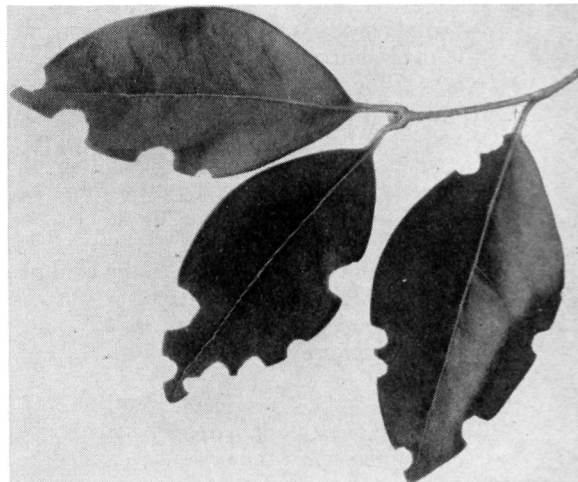
Adult weevils emerge in the spring. They are unable to fly, and hide in debris on the ground during the daytime. At night they crawl up the plants and feed

on the margins of the leaves, producing characteristic scallops.

Egg laying starts about two weeks after emergence, and each female may lay several hundred eggs the first season and a similar number if they survive until the following year. The eggs are laid on the soil, and they hatch in about two weeks.

The tiny grubs feed at first on small rootlets, but by late winter or early spring—when they are nearly grown—they feed on larger roots and may girdle the stem just below the surface of the soil.

The application of organic insecticides to the top of the soil is ordinarily ineffective for grub control as the chemicals are strained out near the surface. Application of excessive amounts of benzene hexachloride to the soil surface of four-inch pots of camellias failed to kill grubs near the bottom of the pots, even with very heavy watering. However, when the grower is suffering heavy losses in the early spring, he may obtain considerable control of grubs girdling near the surface.



Foliage of Japanese privet showing characteristic scallops caused by feeding of adult *Brachyrhinus* weevils.

Girdling of a rhododendron by *Brachyrhinus* grubs. The calloused areas around the feeding injury indicate that the plant was not killed immediately.



Control

The most effective method of *Brachyrhinus* control is to kill the adult weevils as they emerge in the spring. In the San Francisco Bay region during 1951, the earliest emergence observed for *B. sulcatus* under lathhouse conditions was on March 15. The peak of emergence was in early May. A similar pattern of adult appearance was observed in connection with potted plants being forced under greenhouse conditions.

Experimental work was conducted during the spring of 1951 in a 3-acre lathhouse of azaleas where 75% of the plants were being killed by *B. sulcatus*. The plots were replicated, each 6' by 25' in beds containing the variety Niobi. The soil was largely composed of peat moss.

Chlordane, dieldrin, and toxaphene were the experimental materials used. Benzene hexachloride, heptachlor, and aldrin are also known to be effective, both for adult control and—when mixed in the soil—for grub control. Apple baits containing calcium arsenate or sodium fluosilicate have been used for adults, but their degree of effectiveness appears to depend on the species of *Brachyrhinus*.

The chlordane liquid concentrate was diluted to 1.5 pounds actual chlordane

per 100 gallons of water and applied at a rate of 8.5 pounds chlordane per acre.

The dieldrin liquid concentrate was diluted to 0.4 pound actual dieldrin per 100 gallons of water and applied at a rate of 1.5 pounds dieldrin per acre.

The toxaphene liquid concentrate was diluted to three pounds actual toxaphene per 100 gallons of water and applied at a rate of 17 pounds toxaphene per acre in the original application, but subsequent treatments were at a rate of 12 pounds toxaphene per acre.

The azalea foliage was treated for tolerance and the plots were weedy, so that the rates of application to the soil were actually less than indicated.

The first application was made on April 5, and the treatment was repeated on May 6. A third application was made to one-half of the plots on June 6. No insecticidal damage to the azaleas was observed.

Both sick and active weevils were found in all plots on April 23, and in May at the time of the second application. No live beetles were found in June—apparently there was sufficient residual insecticide on the soil to kill emerging weevils. However, some plots received a third application. No adult feeding injury nor live weevils was observed in any of the plots during the following summer, and no grubs were found when surviving plants were examined the following February.

Although the plots were small and

Continued on page 16

NEW PUBLICATIONS



—now ready for distribution—

Single copies of these publications—except the Manuals—or a catalogue of Agricultural Publications may be obtained without charge from the local office of the Farm Advisor or by addressing a request to: Agricultural Publications, 22 Giannini Hall, University of California, College of Agriculture, Berkeley 4, California.

LEMONS AND LEMON PRODUCTS: CHANGING ECONOMIC STATUS, 1951-52, by Sidney Hoos and R. E. Seltzer, *Calif. Exp. Sta. Bul.* 729. Provides information helpful in adjusting to conditions so the fresh and products markets may be developed and expanded.

PRUNING ORNAMENTAL TREES, SHRUBS, AND VINES, by W. H. Chandler and Ralph D. Cornell, *Extension Service Circular* 183.

PEACH VARIETIES FOR A WARM WINTER CLIMATE, By J. W. Lesley and M. M. Winslow, *Circular* 406.

THE BORDER METHOD OF IRRIGATION, by James C. Marr, *Circular* 408.

DECLINE

Continued from page 11

ant. Those on *Citrus macroptera* and on the Bigaraldin are susceptible.

Observations are being continued and plantings of trees on additional roots added. The grower is advised not to plant trees unless their susceptibility to quick decline has been determined; and to buy trees from a reliable nurseryman who can provide a past history of the top-root combination.

W. P. Bitters is Assistant Horticulturist, University of California College of Agriculture, Riverside.

E. R. Parker is Horticulturist, University of California College of Agriculture, Riverside.

The above progress report is based on Research Project No. 1382.

WEEVIL

Continued from page 5

represented only one season's work, it would appear advisable for the nurseryman in the San Francisco Bay area to treat for *Brachyrhinus* early in April and early in May. More extensive tests are being made on a commercial basis this spring.

A. Earl Pritchard is Assistant Professor of Entomology and Parasitology, University of California College of Agriculture, Berkeley.

The above progress report is based on Research Project No. 1318.



Penalty for private use to avoid payment of postage, \$300

University of California College of Agriculture, Agricultural Experiment Station, Berkeley 4, California

Paul F. Sharp.

Director

Free—Annual Report or Bulletin or Report of Progress Permit No. 1127

DONATIONS FOR AGRICULTURAL RESEARCH

Gifts to the University of California for research by the College of Agriculture accepted in February, 1952

BERKELEY

Heckathorn and Co.	10 lbs. 50% wettable chlordane
For experimental purposes on garden centipede	
Loring Hoag	5 lbs. rose clover
For establishing range pasture test plots	
H. D. Hudson Mfg. Co.	25 lbs. Smilo
For experimental work on control of poultry mites	
Julius Hyman Co.	Admiral Duster No. 766
	50 lbs. P 162
	5 lbs. emulsifier
	5 gals. P 162
	1/2 gal. emulsifier
For use in fumigation studies of crown gall bacteria in soils and control of Armillaria and Dematophora root rots	
Lederle Laboratories Division of American Cyanamid Co.	50 mg. aminopterin
For embryonic research	
Merck & Co., Inc.	10 ampules leucovorin
For nutritional research	
Naugatuck Chemical	20 mg. crystalline vitamin B ₁₂
To support residue analysis on samples of fruits and vegetables, that have been processed, for the purpose of flavor evaluation	
Niagara Chemical Co.	\$233.35
For establishment of weed control plot on cereals	
Staten Island Co.	1 3-lb. bag Niagrathal weed killer
For studies dealing with biology of insect pests attacking stored grains	
	100 lbs. wheat

DAVIS

American Potash Institute, Inc.	1 ton potassium sulfate
For continuation of work on orchard soil fertility	
Dr. James A. Berry	laboratory articles
For the Division of Food Technology	
Cal. Com. Rel. of Electricity to Agriculture	\$3,125.00
Continuation of support of investigations on uses of electricity in agriculture	
California Turkey Growers Assn.	turkey hatching eggs
For experimental purposes	
Canners League of California	\$99.08
Continuation of investigations on the production of seed of asparagus varieties 499 and 500	
Donsing Poultry Breeding Farm	200 S.C.W.L. male chicks
For experimental purposes	
Ed Heitman	1 registered Duroc gilt
For use in the breeding herd	
Jackson & Perkins Co.	135 started eye rose plants of Mardi Gras variety and license to grow same for cut flowers
For testing and research in flower production	
Lederle Laboratories Division of American Cyanamid Co.	aureomycin in HCL crystalline 50 grams
For experimental purposes	
Eli Lilly and Co., Research Department	two one-ounce bottles of "Merthiolate" substance
To aid studies on microbial chitinase	
Linde Air Products Co.	1 lb. polyethylen powder
For experimental purposes	
Producers Cotton Oil Co.	200 lbs. cottonseed meal
For experimental purposes	
William J. Stange Co.	4 ozs. parsley oil and
For experimental purposes	
C. M. Volkman & Co.	4 ozs. celery cleoresin
For research in turf management	
	4 lbs. of Merion Bluegrass B27

LOS ANGELES

Amling-DeVor Nurseries, Inc.	36 "Better Times" rose plants
For floricultural research	
Valley Rose Nursery	50 "Better Times" rose plants
For floricultural research	

RIVERSIDE

Rohm and Haas Company	\$3,000.00
To continue support of investigations for the purpose of promoting the development of agricultural insecticides and fungicides and the screening of samples and the field testing of promising compositions	